



MODEL
100-200 | 150-200

CAPACITY	100/200	150/200
SWING OVER BED	275	275
MAXIMUM TURNING LENGTH	200	200
STANDARD TURNING DIA.	100	100
CHUCK SIZE	135	165
MAX. TURNING DIA.	150	200
X-AXIS TRAVEL	300	300
Z-AXIS TRAVEL (B)	200	200
RAPID TRAVERSE	24M	24M

AXIS	100/200	150/200
X - Z AXIS LM	35	35
Z AXIS BALL SCREW	32 x 10	32 x 10
MOTOR TORQUE (Z axis)	6NM	6NM
X ASIX BALL SCREW	32 x 10	32 x 10
MOTOR TORQUE (X axis)	6NM	6NM

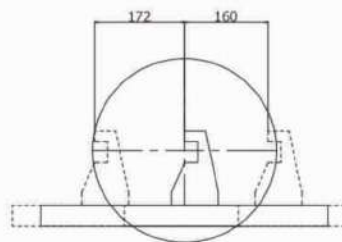
MAIN SPINDLE	100/200	150/200
SPINDLE MOTOR : SIEMENS	3.5/5.5	7.5/9
FANUC	3.5/5.5	7.5/11
SPINDLE BORE	38	47
SPINDLE NOSE	A2-4	A2-5
MAXIMUM BAR CAPACITY	25	36
SPINDLE SPEED RANGE	50-4500	50-3000
FULL POWER SPEED RANGE	750-3500	750-3500

TOOL	100/200	150/200
MAX. BORING BAR DIA.	32	32
TOOL SIZE (CROSS SECTION)	25 x 25	25 x 25

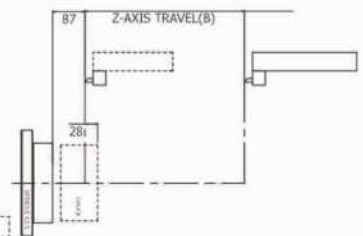
OTHERS	100/200	150/200
POSITIONING ACCURACY (MICRON)	±0.010	±0.010
REPEATABILITY (MICRON)	±0.005	±0.005
WEIGHT	2000Kg.	2000Kg.

NOTE : Specification Subject to Change without Prior Notice.

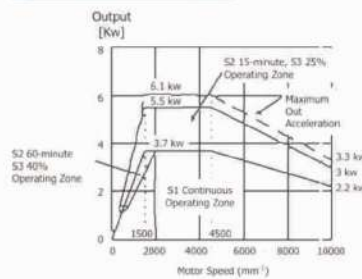
TOOL INTERFERENCE DIAGRAM



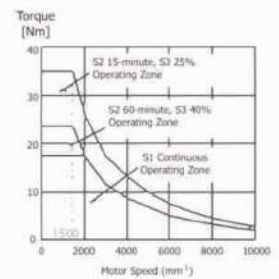
WORKING RANGE



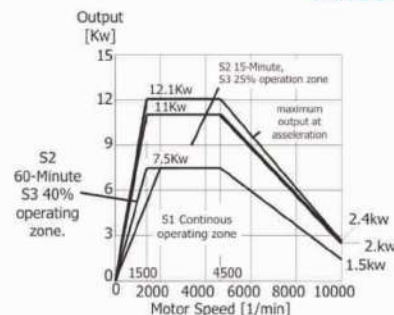
POWER DIAGRAM



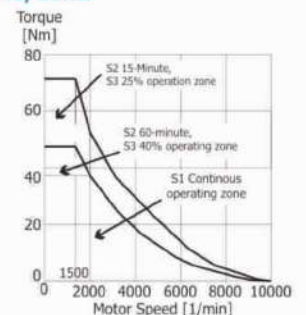
FANUC : 3.5/5.5Kw



POWER DIAGRAM



FANUC : 7.5/11Kw



SIEMENS : 7.5/9Kw

